

THE HUB

02.09.2015

Premises Systems is introducing "The Hub," their periodic newsletter for clients. The Hub is designed to communicate in a casual fashion, product and service innovations, software end of life information and other information related to the solutions provided by Premises Systems.

INSIDE THIS ISSUE:

SHORETEL 400 SERIES

PREMISES SPECIALIZED DIVISIONS 2

REFERRAL REWARDS 3

DID YOU KNOW? 4

LUNCH & LEARN 5

400 SERIES NOW AVAILABLE!

The SIP-based 400 series phones were recently introduced by ShoreTel. They are available in four models – IP 420, IP480, IP480G, and IP485G – ranging from a basic phone to a more advanced backlit, color display phone for executives. The 400 series phones have superior sound quality on the handset and speakerphone; multiple line appearances; an ergonomic design; easy to read display; and convenient access to features, including voice mail, directories and conferencing. They require a minimum software version of 14.2 to be supported on your ShoreTel system. Please note that the ShoreTel 200 series phones are still available and supported by ShoreTel.



ShoreTel IP Phone 420

2 Lines



ShoreTel IP Phone 480

8 lines, backlit grayscale display, Visual voicemail, 10/100 Ethernet



ShoreTel IP Phone 480g

8 lines, backlit grayscale display, Visual voice mail, Gigabit Ethernet



ShoreTel IP Phone 485g

8 lines, backlit color display, Visual voice mail, Gigabit Ethernet



ShoreTel IP Phone 655

12 lines, Large Color Touch Screen, Integrated VPN Client, Gigabit Ethernet



PREMISES SYSTEMS ALSO OFFERS THE FOLLOWING SERVICES THROUGH THEIR AFFILIATED COMPANIES

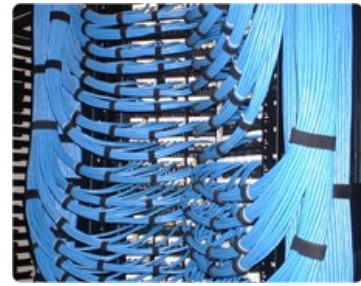
Since 1992, CCI has completed structured voice and data cable plant systems ranging from small projects to multi building campus projects in reuse, remodel and new construction environments. CCI has RCDD certified estimating staff and expert installation teams with a 20 year plus average experience level for our installers.

SOLUTIONS

- Copper and Fiber Cabling for Data & Voice Communications
- Paging Systems
- Audio/Video Intercom
- Video Teleconferencing
- Sound Masking Solutions

SERVICES

- Structured Cable System Design
- Certified Cable System Installation & Testing; Complete Labor; Material & Application Assurance Warranties
- Projects from Small Service (Move, Add, Change) to Multi-Building Installations



Premises Control utilizes industry best practices when delivering safety, compliance, and physical security to clients. Our highly trained engineers and technicians design build and support security technology solutions to accommodate every unique client circumstance.

SOLUTIONS

- Access Control - Software House Advanced Integrator; C-Cure 800, 8000 & 9000 Platforms (Card Access & Biometrics)
- CCTV Video Surveillance System (IP, Analog, and Covert)

SERVICES

- Comprehensive Security Analyses & Risk Assessments
- Installation, Design, and Service/Software Support
- Dedicated Service Team Electronic Door Hardware, and System Software Troubleshooting & Repair
- Upgrades to existing Security Technology System

PREMISES REFERRAL REWARDS

Premises Systems, Inc. is introducing a **new and exciting** referral program to our current and potential customers. Each prize will be awarded 30 days after install. A referral program form will be required to be filled out per referral to claim your reward. Please contact msikora@premysys.net for more details.

- IF YOU REFER A NEW CUSTOMER THAT MAKES A PURCHASE WORTH 25K OR HIGHER IN PRODUCTS OR SERVICES YOU WILL RECEIVE A TOP OF THE LINE, BRAND NEW IP 655 - THE LATEST TOUCHSCREEN PHONE FROM SHORETELI!

ShoreTel's most advanced telephone, the IP 655 provides 12-line appearances with a large backlit touch color display. Advanced microphone technology delivers superb speaker-phone capability for offices and conference rooms when used with the optional extension microphone accessories. Features include 12 lines, Large color touch screen, Advanced microphone array technology, an Integrated VPN Client, Gigabit Ethernet and Visual voicemail director with presence indication.



- IF YOU REFER A NEW CUSTOMER THAT MAKES A PURCHASE WORTH 20K OR HIGHER IN PRODUCTS AND SERVICES YOU WILL RECEIVE AN IP930 D - THE LATEST IN SHORETEL PORTABLE TECHNOLOGY!!

Ideal for the receptionists, retail store staff, facilities and warehouse managers needing in-building mobility, the IP 930D delivers a comparable feature set to the IP230 in a cordless phone, including three line appearances, four function keys, three soft keys, and a 2.5 mm headset jack.



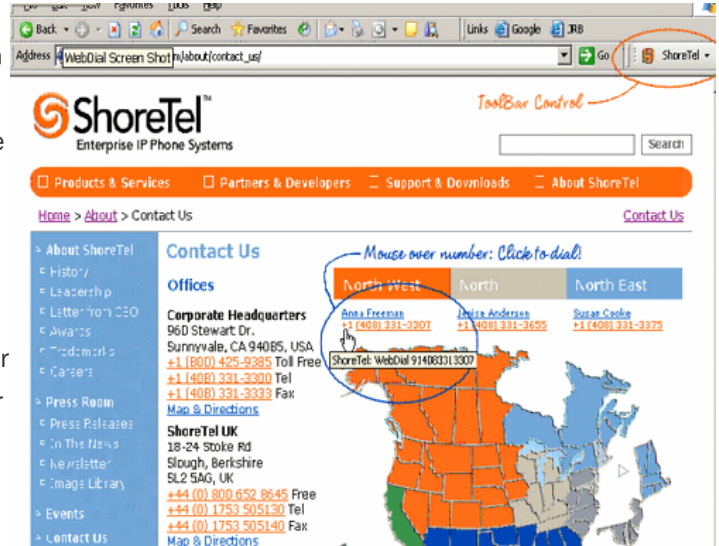
- IF YOU REFER A NEW CUSTOMER THAT MAKES A PURCHASE WORTH 15K OR HIGHER IN PRODUCTS AND SERVICES YOU WILL RECEIVE AN IP480—AN 8 LINE FULL DUPLEX SPEAKERPHONE!



DID YOU KNOW?!

SHORETEL PHONES HAVE MANY FEATURES AND FUNCTIONALITIES, BUT SHORETEL PHONES ALSO PROVIDE:

How would you like to dial a number simply by clicking on an entry in MS Outlook or a phone number in your browser entry? ShoreTel's Web Dialer converts web page phone numbers to clickable links. ShoreTel's optional Web Dialer streamlines business communications by offering a quick and easy way to highlight and create clickable links to phone numbers posted on the Web. With Web Dialer deployed, users simply click on a number and it links their ShoreTel phone to that number, whether it's in a Web-based application or online phone directory.



DID YOU KNOW?!



The MI Senate signed bill 636 into effect, which allows phone companies to eliminate landlines by 2017. This measure makes it easier for telephone companies to invest in new types of technology, helping our state move from analog to digital technology. As a result, you may have recently seen an increase in your analog phone bills, making your transition to a true IP based platform even more desirable and cost effective.

DID YOU KNOW?!

We do free demonstrations! Challenge other UC solutions to bring a demo to you. ShoreTel's simple and effective architecture allows for us to prove to you on-site how it works. For a demo please contact us directly at 248.363.0900



PREMISESYSTEMS



DATE:

04/02/15

11AM - 1PM

MAKE IT A GOAL TO PARTNER WITH PREMISES SYSTEMS

TECHNOLOGY LUNCHEON

**COVERING UNIFIED COMMUNICATIONS,
VIDEO CONFERENCING & WIRELESS
NETWORK TECHNOLOGIES**

WHERE

**AUTOMATION ALLEY
2675 BELLINGHAM DRIVE
TROY, MI 48083**

LUNCH PROVIDED!

PRIZES

**RAFFLE
INCLUDES
RED WINGS
TICKETS AND
ASSORTED
PRIZES**



R.S.V.P TO 248.715.1097 OR MSIKORA@PREMSYS.NET BY 3/12/15

PREMISESSYSTEMS

ShoreTel

ruckus
Simply Better Wireless.

LifeSize
A division of Logitech